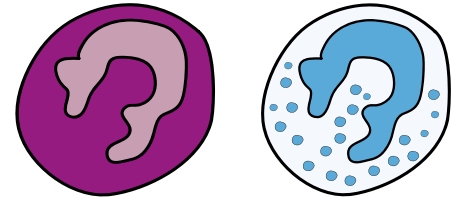


## Acute myelomonocytic leukaemia (AMML)

Acute myelomonocytic leukaemia (AMML) is a fast-growing blood cancer. It is a rare type of acute myeloid leukaemia (AML). AMML develops when immature white blood cells called myeloblasts and monocytes divide uncontrollably. They build up in your bone marrow and stop it making enough healthy blood cells.



Immature white blood cells

We do not know the exact cause of AMML, but it is not because of anything you have or have not done.

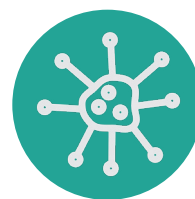
The signs and symptoms of AMML include:



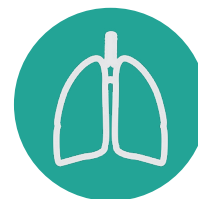
Fatigue



Fever



Frequent  
infections



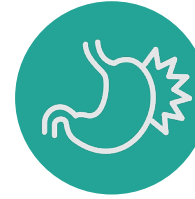
Feeling  
breathless



Low red blood  
cell count  
(anaemia)



Bleeding or  
bruising



Swollen spleen  
or liver



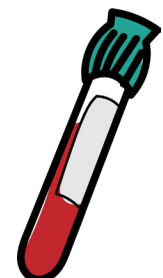
Swollen  
glands

AMML is usually diagnosed from blood tests and bone marrow tests.

### Treating AMML

AMML is usually treated in a similar way to other types of AML. Your haematology team will recommend either **intensive** or **non-intensive** treatment, depending on your individual needs.

The outcome of treatment varies from person to person. Your medical team are best placed to discuss what they expect for you.



**Intensive treatment** happens in phases.

Induction phase:

- Aims to kill as many leukaemia cells as possible.
- Usually involves chemotherapy, sometimes with a targeted medicine.
- You usually stay in hospital for a few weeks to have it.



Consolidation phase:

- Aims to kill any leukaemia cells that may be left.
- Often involves cycles of chemotherapy, sometimes with a targeted medicine. Some people might have a stem cell transplant.
- You usually have it in hospital and go home between cycles.



Maintenance phase (for people with a higher chance of relapse):

- Aims to reduce the risk of your AMML coming back.
- Usually involves tablets to take at home.

**Non-intensive treatment** is gentler. It aims to control your AMML as much as possible rather than cure it. It usually involves low-dose chemotherapy or targeted therapy to take at home.

It can be hard dealing with treatment and its side effects. Don't be afraid to ask for help from family, friends, your medical team or Leukaemia Care.

AMML is a subtype of AML. For [more information about AML](#), follow the link or scan the QR code. Or search 'AML' at [www.leukaemiacare.org.uk](http://www.leukaemiacare.org.uk). This also includes links to order free information in print.

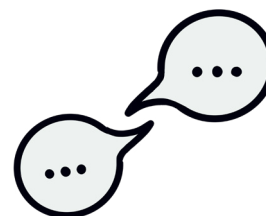


**Need help? We offer a range of support services.**  
To find out more, scan the QR code, click the link or search 'support for you' at [leukaemiacare.org.uk](http://leukaemiacare.org.uk)



## Want to talk?

Call our freephone helpline on **08088 010 444**  
Message us on WhatsApp at **07500 068065**  
[www.leukaemiacare.org.uk](http://www.leukaemiacare.org.uk)  
[support@leukaemiacare.org.uk](mailto:support@leukaemiacare.org.uk)



If you'd like to comment on our content or have a list of the sources we used for this factsheet, please get in touch. Email [information@leukaemiacare.org.uk](mailto:information@leukaemiacare.org.uk) or call **01905 755977**. Or complete our [short survey](#).



Version: 1    Reviewed: 02/2025    Next review: 02/2028

Leukaemia Care is registered as a charity in England and Wales (no. 1183890) and Scotland (no. SC049802). Company number: 11911752 (England and Wales). Registered office address: One Birch Court, Blackpole East, Worcester, WR3 8SG