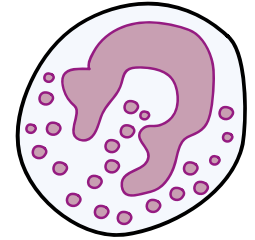


Chronic eosinophilic leukaemia (CEL)

Chronic eosinophilic leukaemia (CEL) is an extremely rare, slow-growing blood cancer. It affects white blood cells called eosinophils. The cells don't develop properly and divide uncontrollably. This may stop your bone marrow from making enough healthy blood cells.

CEL mainly affects people between 50 and 70 years, but it can affect people of any age. It is more common in men than in women.



Eosinophil

We do not know the exact cause of CEL. It is not because of anything you have or have not done.

CEL can cause the following signs and symptoms:



**Swollen
spleen or liver**



**Extreme
tiredness**



**Shortness of
breath, cough**



**Swollen
lymph nodes**



Anaemia



**Bruising or
bleeding
easily**



Losing weight



Skin problems



**Heart
problems**



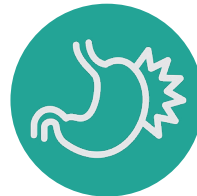
Fever



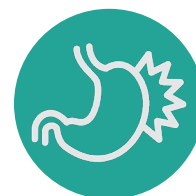
Night sweats



Diarrhoea



Tummy pain



**Tummy
swelling**

CEL is usually diagnosed from blood tests and bone marrow tests. Your team will let you know if you need any other tests or scans.

Treating CEL

Your team will suggest the most suitable treatment for you. This might be:

- Hydroxycarbamide tablets. This is a type of chemotherapy.
- Interferon alfa injections. These help stop cancer cells from growing and dividing.
- Imatinib. This is a type of targeted therapy. You take it as tablets or capsules.
- Steroid tablets. These can help lower the number of eosinophils and improve your symptoms and side effects.
- Stem cell transplant. This is an intensive treatment that you have in hospital. It is only suitable if you are fit enough and a matched donor is available.
- A clinical trial, if there is one suitable for you.
- Medicines to prevent or treat symptoms or side effects.

Sometimes, CEL can transform into a faster-growing type of blood cancer. If this happens, your medical team will let you know what treatment you will have.

Finding out you have CEL can be overwhelming. Don't be afraid to ask for help from family, friends, your medical team or Leukaemia Care.

This information is aimed at people in the UK. We do our best to make sure it is accurate and up to date but it should not replace advice or guidance from your health professional.

For more [information about leukaemia](#) follow the link or scan the QR code. Or visit www.leukaemiacare.org.uk. This also includes links to order free information in print.



Need help? We offer a range of [support services](#). To find out more, scan the QR code, click the link or search 'support for you' at leukaemiacare.org.uk



Want to talk about CEL?

- Call our freephone helpline on **08088 010 444** (weekdays 9am to 4.30pm)
- Send a WhatsApp to **07500 068065** (weekdays 9am to 5pm)
- Visit www.leukaemiacare.org.uk
- Email support@leukaemiacare.org.uk

If you have any feedback or you'd like a list of the sources we used for this factsheet, please get in touch. Email information@leukaemiacare.org.uk or call **08088 010 444**. Or complete our [short survey](#) to let us know what we can improve.