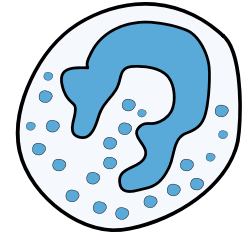


Chronic neutrophilic leukaemia (CNL)

Chronic neutrophilic leukaemia (CNL) is a very rare type of blood cancer. It happens when your bone marrow makes too many white blood cells called neutrophils. This may stop your bone marrow from making enough healthy blood cells.

CNL mainly affects people over 60, but it can affect people of any age.



Neutrophil

We do not know the exact cause of CNL. It is not because of anything you have or have not done.

You might not have any symptoms when you are first diagnosed. But you might get signs and symptoms over time, which could include:



Swollen spleen or liver



Bleeding or bruising easily



Fatigue



Anaemia



Losing weight



Night sweats



Itchy skin



Joint problems



Bone pain



Skin problems



Frequent or long-lasting infections

Contact your medical team straight away if you have bleeding, blood in your sick or poo, or severe headache, dizziness, confusion or feel weak or numb.

CNL is usually diagnosed from blood tests and bone marrow tests. Your team will let you know if you need any other tests or scans.

Treating CNL

Your team will suggest the most suitable treatment for you. This might be:



- Hydroxycarbamide tablets. This is a type of chemotherapy.
- Interferon alfa injections. These help stop cancer cells from growing and dividing.
- Targeted medicines used to treat other blood cancers, such as ruxolitinib. These are usually tablets.
- Stem cell transplant. This is an intensive treatment that you have in hospital. It is only suitable if you are fit enough and a matched donor is available.
- A clinical trial, if there is one suitable for you.
- Medicines to prevent or treat symptoms or side effects.

Sometimes, CNL can transform into a different type of blood cancer. If this happens, your medical team will let you know what treatment you will have.

Finding out you have CNL can be overwhelming. Don't be afraid to ask for help from family, friends, your medical team or Leukaemia Care.

This information is aimed at people in the UK. We do our best to make sure it is accurate and up to date but it should not replace advice or guidance from your health professional.

For more [information about leukaemia](#) follow the link or scan the QR code. Or visit www.leukaemiacare.org.uk. This also includes links to order free information in print.



Need help? We offer a range of [support services](#). To find out more, scan the QR code, click the link or search 'support for you' at leukaemiacare.org.uk



Want to talk about CNL?

- Call our freephone helpline on **08088 010 444** (weekdays 9am to 4.30pm)
- Send a WhatsApp to **07500 068065** (weekdays 9am to 5pm)
- Visit www.leukaemiacare.org.uk
- Email support@leukaemiacare.org.uk

If you have any feedback or you'd like a list of the sources we used for this factsheet, please get in touch. Email information@leukaemiacare.org.uk or call **08088 010 444**. Or complete our [short survey](#) to let us know what we can improve.



Version: 1 Reviewed: 12/2025 Next review: 12/2028

Leukaemia Care is registered as a charity in England and Wales (no. 1183890) and Scotland (no. SC049802). Company number: 11911752 (England and Wales). Registered office address: One Birch Court, Blackpole East, Worcester, WR3 8SG